

# Skyline *Connect*



A newsletter for the Skyline community

# 1

## TERM 1 EDITION

Welcome to the start of a brand new year! There's something energising about fresh beginnings- new goals, new opportunities, and a renewed sense of direction for the year ahead. This edition of the Skyline Newsletter is packed with updates, opportunities, and celebrations from across the program. From a wrap-up of the Residential Program and our North East Catch-Up Event to upcoming experiences like the NGV Masterclass, there's plenty to reflect on and look forward to. You'll also find new opportunities through the Larita Academy and Enquiring Minds Maths Mentoring Program, highlights from the ForHealth Observership, and a celebration of scholarship success. Alongside this, we're shining a light on our incredible community through Student and Alumna Spotlights, and sharing key updates including Hatch, the Companion Teacher Toolkit, and our new Parent and Carer Toolkit to support students throughout the year ahead.



### In this issue:

- \* Residential Wrap Up
- \* Upcoming NGV Masterclass
- \* Larita Academy Program
- \* Institute for Enquiring Minds
- \* Trinity College Academic Awards
- \* Student Spotlight
- \* North East Catch Up EEvent
- \* ForHealth Observership Program
- \* Celebrating Scholarship Success
- \* Hatch Update
- \* The Role of Companion Teacher

# RESIDENTIAL CAMP 2026

## ORMOND COLLEGE, UNIVERSITY OF MELBOURNE

### 19-21 JANUARY 2026

The Residential Program 2026 took place from 19-21 January at Ormond College, University of Melbourne, bringing together SKYline students for three days of learning, connection and reflection. This year, 121 Skyliners attended across Year 11 and Year 12 cohorts.

Hosted at a University of Melbourne Residential College, the camp offered students a genuine insight into tertiary life. Staying in a dormitory accommodation, learning in lecture rooms, and sharing meals in the dining hall allowed students to step into an environment that many had not previously experienced. For many, this reinforced a powerful message at the heart of Skyline's work: university is not out of reach, and they belong here.

The camp was intentionally structured to support students at different stages of their Skyline journey, while also building a strong shared community. Year 11 students commenced the program on Monday, focusing on transition, identity and connection, before staying overnight on campus. On Tuesday, Year 12 students joined for a full day of shared learning and activities, before staying overnight. Wednesday was dedicated to Year 12 students, with a future-focused program supporting aspiration, direction, and life beyond school.



# WHO AM I?

## YEAR 11 IDENTITY, BELONGING AND CONFIDENCE

For Year 11 students, Residential Camp marked the beginning of their Skyline journey. Their program focused on the theme Who am I?, supporting students to explore identity, confidence, and connection. Workshops and mentor-led discussions created space for reflection and encouraged students to step outside their comfort zones in a supportive environment.

Across the day, students participated in a series of interactive sessions designed to build self-awareness and strengthen peer connection. Zoe from Alkimia Learning led the opening workshop, Better Together, helping students establish a strong foundation of trust and community. Kristy then guided students through Ikigai: Crafting Your Main Character Moment, supporting students to reflect on what motivates them and what matters most. The day concluded with LEGO Serious Play, facilitated by Ian Grimwood, where students explored identity and teamwork through hands-on creative problem solving.

Students frequently spoke about the impact of being surrounded by peers with similar experiences. One student reflected on the joys of *“meeting new people, sleeping at an actual university and using their facilities,”* while another shared that the most valuable part was *“making new friends and understanding who I am as a person.”*

Confidence-building emerged as a strong theme in Year 11 feedback. For some students, this was a noticeable shift over just a few days.

*“The most valuable part was my group mentor. He helped a lot with gaining my confidence and helped me with speaking up in the group...Where on the first day I probably said less than 20 words.”*



*“The best part of residential was looking toward my future and meeting others in the same position as me, which definitely makes me feel more included and involved.”*

# TOGETHER IN COMMUNITY

Tuesday marked a shift in energy as Year 12 students arrived and the full Skyline cohort came together. With both year levels learning side by side, the day strengthened cross year connections and reinforced a shared sense of community.

The program featured targeted workshops led by Skyline Program Managers, alongside Skyline Hatch sessions delivered by alumni who have recently completed VCE.

Year 11 students focused on building strong study foundations. Their Hatch session covered practical study strategies, effective revision planning, and how to use Skyline Hatch as a consistent academic resource across the year, not just during exams.

Year 12 students took a strategic focus, exploring how to maximise Hatch in the lead up to exams. This included prioritising subjects, using revision lectures effectively, refining exam technique, and asking detailed questions of alumni presenters. The peer perspective added credibility and reassurance at a pivotal stage of their final year.

At lunchtime, the Partners in Possibility Expo connected students with organisations including Enquiring Minds, Edrolo, ForHealth, Fraser's Medical, HEX, Larita Academy, Lander and Rogers, and ValueLab, alongside tertiary representatives from St Hilda's College, Janet Clarke Hall, Queen's College, Ormond College, Newman College and the University of Melbourne.

For many students, the Expo brought future pathways to life. One Year 12 shared, *"The best part of Residential Camp was asking questions about college and learning about networking. I didn't know college was even a possibility because it's not talked about at my school."*

Students across both year levels also valued the peer connection. As one reflected, *"I really enjoyed spending time with like-minded people and realising common experiences among students at different schools."*

A highlight of the afternoon was a joint scavenger hunt across the university campus. Mixed teams of Year 11 and Year 12 students navigated key landmarks, completed challenges, and worked together to solve clues. The activity added a sense of fun and friendly competition, while also building confidence in navigating a tertiary environment that can initially feel unfamiliar.



# WHO DO I WANT TO BE?

## YEAR 12 ASPIRATION, DIRECTION AND LIFE BEYOND SCHOOL

The final day of Residential Camp focused on Year 12 students and the theme Who do I want to be? As students prepare for their final year of school, sessions encouraged reflection on purpose, identity, and future direction.

Year 12 students began their camp experience with More Than a Score, led by the Skyline Program team, which set the tone for the day by reinforcing that success is not defined by a single number.

Wednesday's program brought together a diverse group of facilitators who guided students to think deeply about leadership, values, and life beyond school. The day opened with a future-focused workshop led by Jess and Purvang at HEX, building confidence and encouraging big-picture thinking. Students then engaged in a powerful session with Ada of Asialink, which resonated strongly. As one student shared, *"The best part for me was Ada's workshop. The presentation was very impactful."*

The program concluded with a reflective workshop led by Shiung at ValueLab, inviting students to consider their purpose, their influence, and the role they want to play in shaping their future. Several students spoke about the impact of sessions that challenged their thinking and encouraged deeper reflection. One student shared, *"I liked the final session with ValueLab talking about power. It was very insightful and really made me question everything I've been taught before."*





## OUTCOMES

Across both cohorts, student feedback consistently highlighted the impact of Residential Camp 2026 on confidence, belonging, and aspiration. Students reported feeling supported, connected, and more able to imagine themselves at tertiary level and beyond.

## IMPACT SNAPSHOT

- 121** Students attended\*
- 97%** Felt more positive about their future
- 97%** Felt more connected to the Skyline community
- 93%** Built new student connections
- 82%** Reported increased confidence

Student reflections reinforced these outcomes. One student reflected on the importance of peer connection, sharing *“the real highlight was meeting like-minded peers and getting to know them on a deeper level, along with all the laughs we shared during Residential Camp.”*

Another spoke about the confidence gained through new relationships, noting *“meeting new people and gaining that confidence, whether it was friends, Program Managers, or other connections with partners.”*

\* Due to the ongoing Victorian bushfires, transport for students from the North East region was not deemed safe, with major roads closed at the time of Camp. As a result, nine students were unable to attend the camp as planned. Skyline Program Managers are coordinating a dedicated visit to the region to deliver a tailored session for these students, ensuring they are still able to access key program content, connection, and support.





# NGV MASTERCLASS

Skyliners are getting ready for an inspiring day immersed in creativity, ideas, and self-discovery at the NGV!

We'll kick things off at **NGV Australia** with a warm welcome before diving straight into a guided, interactive tour- exploring powerful spaces like **Wurrdha Marra and Future Country**. Skyliners will hear directly from NGV educators and a **Top Arts exhibiting artist**, gaining insight into what it takes to create work at the highest level.

From there, we'll head over to NGV International for lunch, followed by hands-on, small-group sessions in the gallery's permanent collection, where students will engage with artworks in dynamic and thought-provoking ways.

The afternoon shifts focus to personal growth and future thinking. We will rotate through two Skyline workshops: **"You Are a Work of Art"**, designed to build confidence and identity, and **"SMART Goal Setting"**, equipping Skyliners with practical tools to turn ambition into action.

It's a full day of art, ideas, and empowerment, designed to spark creativity, build confidence, and leave students seeing both the world and themselves differently.





# LARITA ACADEMY PROGRAM

This year we are delighted to announce that we have nominated eight alumni to take part in the Larita Academy Program.

## **So what is The Larita Academy?**

Larita Academy is a high-energy, hands-on experience designed for young people aged 15 to 24 who are ready to step outside their comfort zone and start building real confidence, skills, and meaningful connections.

Created for those navigating challenges or barriers, the program focuses on developing key life and career capabilities including teamwork, self-agency, entrepreneurship, personal branding, and financial literacy. It's not just about learning concepts, but actually applying them in real-world contexts, helping participants build both capability and belief in themselves.

Throughout the program, young people are supported to explore who they are, what they're capable of, and how they can take ownership of their future. With a strong focus on practical experience, collaboration, and growth, Larita creates an environment where participants are encouraged to take risks, try new things, and back themselves.

Fully funded through LK Group scholarships, Larita Academy removes financial barriers and opens the door for more young people to access these opportunities. It's more than just a program – it's a launchpad for young people to take charge of their story, build momentum, and shape what comes next.

**[Click here to see what Larita Academy is all about](#)**

LARITA  
ACADEMY

The logo features the words 'LARITA' and 'ACADEMY' stacked vertically. Each letter is a different color: L (red), A (purple), R (teal), I (black), T (red), A (pink) for the top row; and A (teal), C (pink), A (red), D (purple), E (teal), M (red), Y (pink) for the bottom row.



# MATHS MENTORING: INSTITUTE FOR ENQUIRING MINDS

We're excited to celebrate our partnership with the **Institute for Enquiring Minds**, a not-for-profit dedicated to supporting students to build confidence and capability in maths.

The Institute provides **free, high-quality one-on-one maths mentoring** for students from disadvantaged backgrounds, working to increase participation in advanced maths and help students realise their potential. Their mentors come from a range of backgrounds including **university students, academics and industry professionals**, all passionate about making maths more accessible and engaging.

Through this partnership, Skyline students have the opportunity to work closely with a dedicated mentor, meeting regularly to **strengthen their understanding, build problem-solving skills, and grow confidence in their studies**. Sessions are tailored to each student, often focusing on current schoolwork while also exploring deeper concepts and real-world applications of maths.

Following a competitive application and interview process, five highly motivated Skyliners have been selected to take part in the Skyline Enquiring Minds Maths Mentoring Program. These students stood out for their **curiosity, commitment, and willingness to challenge themselves**.

We are incredibly proud to be collaborating with an organisation that is not only building academic skills, but also helping students develop confidence, curiosity, and a genuine appreciation for learning.



# TRINITY COLLEGE ACADEMIC AWARDS NIGHT

Skyline staff attended a truly special evening at the Academic Awards Night at Trinity College, the University of Melbourne.

We recently had the honour to attend this beautiful ceremony. Dr. Michael Pickering, Academic Program Manager, was the perfect, eloquent Master of Ceremonies and it was a privilege to meet Trinity's ninth Warden, The Reverend Professor Russell Goulbourne

Our sincere thanks to Leonie Jongenelis, Nerel Ezra, Scott Charles (Deputy Warden) and Flora Harpley Green for your generous hospitality and making us feel so welcome. We are proud to celebrate our long-standing partnership with you. It was wonderful to join one of our alumni, Taylor Hounsome, at High Table, alongside some of your other inspiring partners, Western Chances and Education Chances Foundation.

One of the many highlights of the evening was to be present in a room filled with such exceptional students. Congratulations to all those high-achieving scholars who received academic awards!



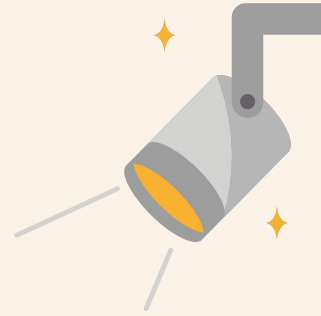


# STUDENT SPOTLIGHT



## Issy Farago Class of 2027

For this year, I'm my school's senior Excellence captain, and I wanted to use my experience with scholarship and work experience applications to good use for helping others! Our school does have a group in place for 'high-ability' students to assist with any struggles they may have and discuss with like-minded individuals.



However, the students are only selected by teachers for performing well academically, not students who want to do just as well, and there are no obvious and easily-accessible resources for students like me for help with scholarship applications or staying informed about opportunities.

So, my goal regarding my role is to improve the advocacy and inclusion of all students with an academic mindset, both for this year and to make a positive impact on the school for future students at Kyneton High. I have made progress with supportive teachers in setting up a club that can hopefully be run bi-weekly for students to come hang out in a quiet space to do schoolwork, help others, be helped, or learn about opportunities that they may have! My hope is that students will be able to have a space where they can feel supported by like-minded students, revise their own studies and gain experience by tutoring others, and give students the chance to be aware of the resources available to them for their student experience and career.



# NORTH EAST SKYLINERS CATCH UP



On March 14th, we had the chance to reconnect with our **North East Skyliners** at a special Catch-Up Day in Alexandra, created for those who were unable to attend Residential due to the bushfires this summer.

While we deeply missed having you at Resi, this day was all about making sure you still had access to the same powerful experiences- from building study skills and confidence, to connecting with others in the program.

Held at the Alexandra Community Hub, the day brought together students for a series of engaging workshops focused on study skills, leadership, communication and personal development. You stepped into each session with openness and determination, and it was incredible to see the way you embraced the opportunity.



Beyond the workshops, a big part of the day was about connection. Through shared activities, conversations, and a welcoming environment, you were able to get to know one another, build friendships, and feel more connected to the Skyline community. There was a strong sense of support and understanding in the room, with many of you sharing similar experiences.

It was a truly special day, and we're so grateful we could spend that time with you. We loved being able to bring a piece of the Residential experience to you- and we can't wait to continue building these connections throughout the year.



# CELEBRATING SCHOLARSHIP SUCCESS

We are incredibly proud to share that **Ken Ho and Amanda Jamieson** were both awarded the prestigious Daffyd Lewis & Mary Jane Lewis Scholarship this year- a truly special achievement.

This scholarship recognises young people who demonstrate not only **academic commitment, but also resilience, integrity, community spirit and a strong sense of purpose.** In addition to the honour of being selected, the scholarship provides meaningful financial support to assist with educational expenses, along with encouragement and connection to a wider community of past recipients who continue to pursue ambitious and impactful pathways.

The Skyline team had the privilege of attending the presentation evening, and it was a genuinely moving celebration. Watching Ken and Amanda step forward to receive their awards was a proud moment for all of us – a reflection of their hard work, character and growth.

The evening also featured **two powerful speeches from alumni of the scholarship.** Hearing past recipients reflect on how the award shaped their journeys – academically and personally- was incredibly inspiring. Their stories reinforced the long-term impact of this opportunity and gave our students a tangible glimpse of what is possible in the years ahead.

Ken and Amanda represent the very best of our community. We could not be prouder of the way they carry themselves, their aspirations for the future, and the example they set for younger students following in their footsteps.

[CLICK HERE TO LEARN MORE ABOUT THE DAFFYD LEWIS AND MARY JANE LEWIS SCHOLARSHIPS](#)





# SKYLINE HATCH UPDATE

Following our Study Skills sessions at RESI with the Classes of 2026 and 2027, we hope all Skyline students have had a positive and confident start to the year.



A key message shared with students was the importance of intentional planning. We encouraged them to regularly review their schedules and ensure to do lists are specific and goal focused, supporting clear action and measurable progress. Strong habits formed early in the year create momentum that carries through the VCE journey.

It has been a busy and energising term for the Hatch team, delivering Study Skills and Strategy sessions to students across Victoria, including Tallangatta Secondary College, Lyndhurst Secondary College, Keysborough Secondary College and Virtual School Victoria.



In addition, Ty and Olivia were invited to present at the CHES Parent Information Session on 17 February. They guided parents through practical ways to support their young person during VCE, including how to recognise signs of stress, fixed mindset, and overwhelm. The session also addressed common study myths and highlighted evidence informed strategies that prioritise wellbeing alongside academic achievement.

We are proud to continue equipping students, families and school communities with practical tools that strengthen confidence, resilience, and performance throughout VCE.



# The Role of *Companion Teachers*

## Your Role – Simple and Supported

Your role is to:

- Be the main point of contact between Skyline and your school
- Let us know if you have any concerns or updates about your student
- Continue providing your usual excellent care and support
- Please give us a heads up if you change schools or are taking substantial leave during the year, so we can ensure continuity of support

That's it.

No extra paperwork. No additional case management. No specialist responsibilities.

## Small moments matter

We encourage you, where possible, to simply take an interest:

“Did you enjoy the Skyline masterclass?”

“What did you get out of it?”

These small conversations mean more than you may realise.



## Want to Know More?

If you'd like to know more about Skyline and the program we run to better support this student, or to put students forward for the program in future years, please reply to this email and a Program Manager will be in contact.

## Program Manager Contacts

### Class of 2026 Regions

Metro, Geelong: Gaynor Borlase [gaynor@skylinefoundation.org.au](mailto:gaynor@skylinefoundation.org.au)

South East: Martha Noone [martha@skylinefoundation.org.au](mailto:martha@skylinefoundation.org.au)

North East, North West, Peninsula: contact either Gaynor or Martha

### Class of 2027 Regions

Geelong: Gaynor Borlase [gaynor@skylinefoundation.org.au](mailto:gaynor@skylinefoundation.org.au)

South East, Peninsula: Martha Noone [martha@skylinefoundation.org.au](mailto:martha@skylinefoundation.org.au)

North East, North West, Metro: contact either Gaynor or Martha